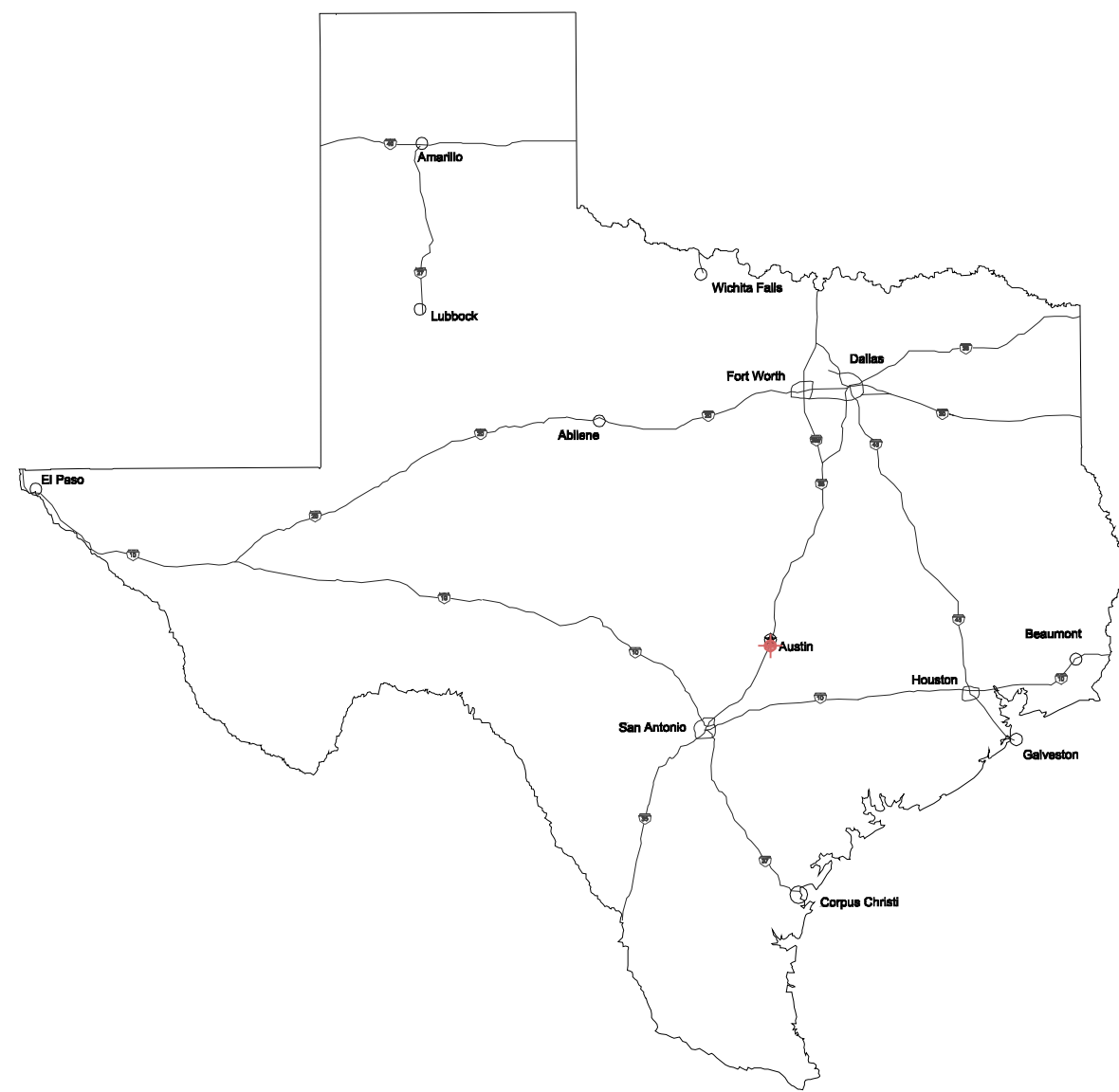


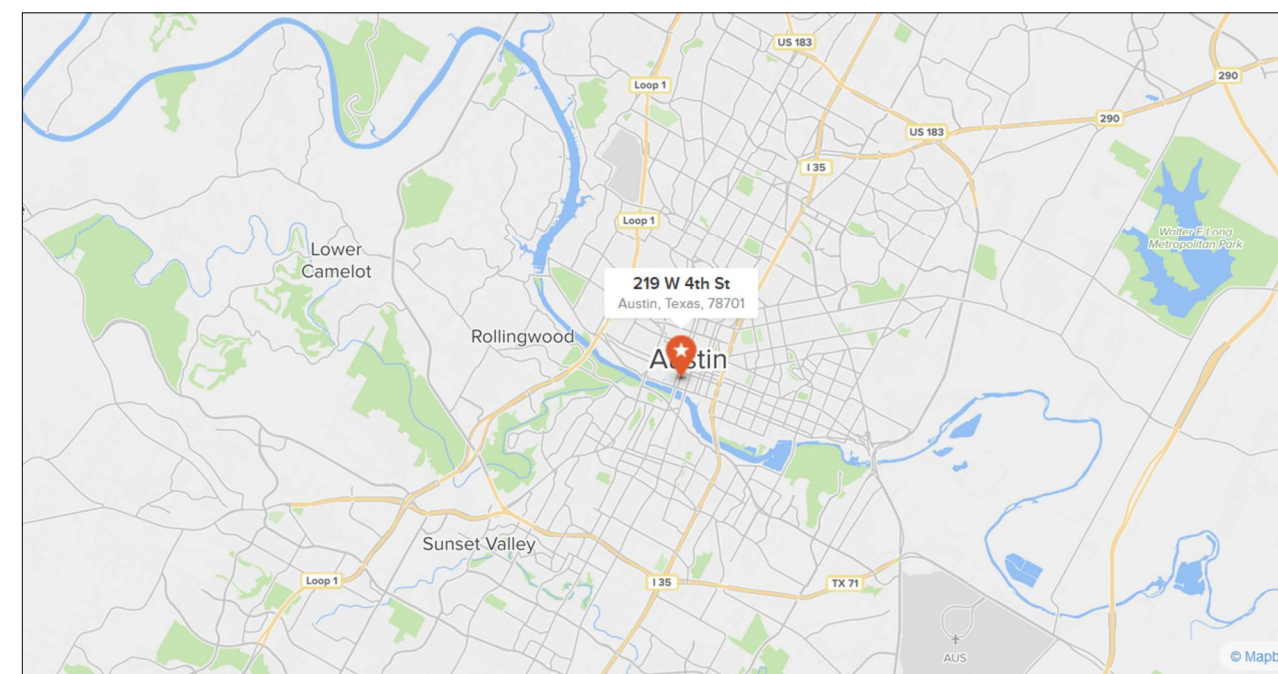
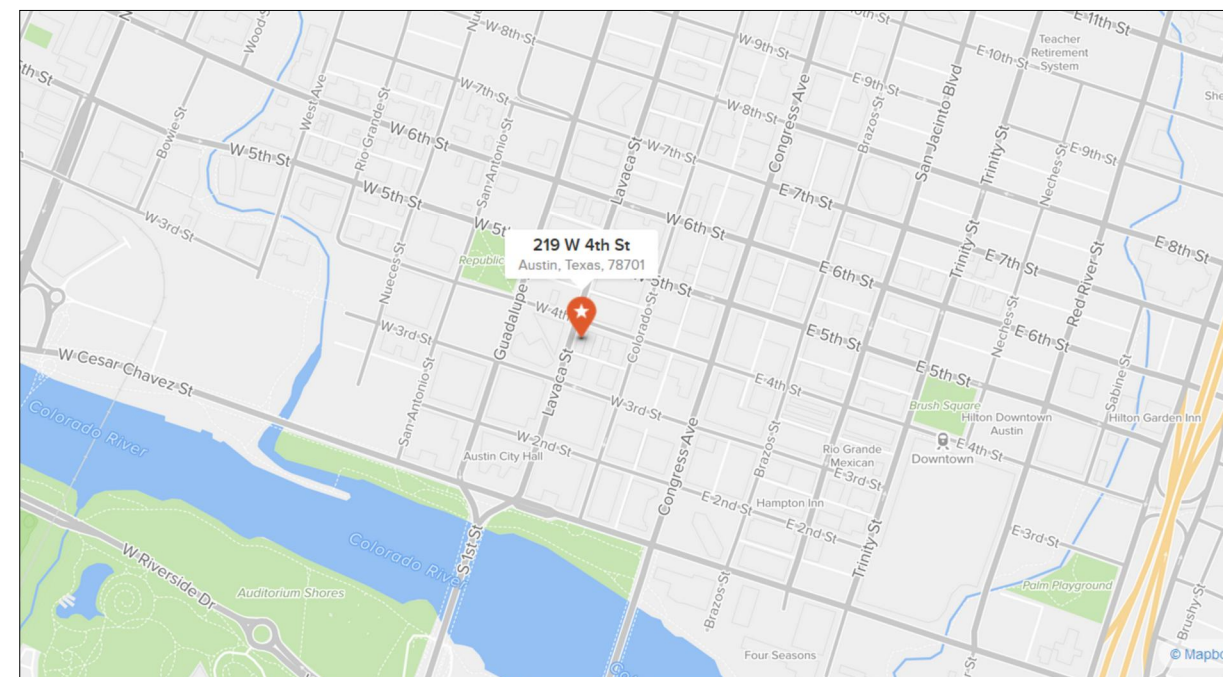
# THE RILEY BUILDING

219 W. FOURTH STREET, AUSTIN, TX 78701

## SWIMMING POOL AND SPA SHOP DRAWINGS



JOB SITE LOCATION



FOR QUESTIONS ABOUT THESE DRAWINGS CONTACT

**JAMES C. REYNA**  
Aquatic Design Specialist  
**REYNA DESIGN, LLC**  
O: 512.687.7869 C: 512.786.7814  
www.REYNADESIGN.us

LEGEND	
<b>LINE TYPES:</b>	
ELECTRICAL - BOND WIRE	
ELECTRICAL CONDUIT	
POOL WALL (SHOTCRETE)	
STEEL REINFORCEMENT (REBAR)	
POOL SUCTION LINES	
POOL RETURN LINES	
WATER LINE	
<b>SYMBOLS:</b>	
SKIMMER	
RETURN FITTING	
STANDARD 12V WALL LIGHT	
12V NICHELESS LIGHT	
ANTI-ENTRAPMENT MAIN DRAIN	
AUTOFILL	
HANDRAIL	
2"x2" STEP / BENCH TILE	
6"x6" DEPTH AND "NO DIVING" MARKERS	
SECTION LINE AND ARROW	
MATERIAL LABEL	

**REYNA DESIGN, LLC**  
O: 512.687.7869 C: 512.786.7814  
www.REYNADESIGN.US

**BWERKS, LLC**  
11183 Circle Drive, Ste. A  
AUSTIN, TX 78736  
PHONE: 512.649.4040  
www.BWERKS.COM

COVER, MAP, LEGEND  
**RILEY BUILDING CONDO**  
SWIMMING POOL SHOP DRAWINGS  
219 W. FOURTH STREET, AUSTIN, TX 78701

© 2016 REYNA DESIGN, LLC  
www.REYNADESIGN.US  
PO BOX 2698 KYLE, TX 78940  
O: 512.687.7869 C: 512.786.7814

NOT FOR CONSTRUCTION

COVER SHEET	
SCALE: N/A	SHEET: COVER

THIS DRAWING IS DIAGRAMMATIC IN NATURE AND SHOULD BE CONSIDERED CONCEPTUAL. IT IS THE BUILDER'S RESPONSIBILITY TO ASCERTAIN THE VALIDITY OF THE DESIGN. UNDER NO CIRCUMSTANCES SHOULD THE DESIGNER BE HELD RESPONSIBLE FOR ERRORS OR INCONSISTENCIES, OR FAILURE TO COMPLY WITH COMMONLY ACCEPTED CONSTRUCTION METHODS OR STANDARDS.  
THIS DRAWING, ALL INFORMATION CONTAINED WITHIN, AND ALL SUBMITTED INFORMATION RELATING TO THIS DRAWING, IS THE PROPERTY OF REYNA DESIGN. POSSESSION, USE, OR DUPLICATION BY ANYONE OTHER THAN THE INTENDED RECIPIENT(S), OR WITHOUT EXPLICIT AUTHORIZATION IS PROHIBITED BY LAW AND SUBJECT TO PROSECUTION.

**NOTES**

GENERAL NOTES:

ALL DRAWINGS PRODUCED BY REYNA DESIGN ARE 'SHOP DRAWINGS' AND ARE INTENDED FOR CLARIFICATION USAGE ONLY

ALL DIMENSIONS SHOWN ARE TO BE FIELD VERIFIED AND ARE SUBJECT TO CHANGE

ALL POOL PLUMBING TO BE SCHEDULE 40 PVC UNLESS OTHERWISE SPECIFIED

STRUCTURAL NOTES:

SHOTCRETE SHALL MAINTAIN A MINIMUM COMPRESSIVE STRENGTH OF 4,000 PSI @ 28 DAYS.

REINFORCING STEEL TO BE:

#4 GRADE 60 PLACED @ 10" O.C.E.W. IN POOLS, UNLESS NOTED OTHERWISE.

GOVERNED BY THE LATEST EDITIONS OF THE FOLLOWING CODES OR SPECIFICATIONS:  
ASTM A615/A615M. NEW, DEFORMED BILLET STEEL BARS, GRADE 60.

TIED WITH FS QQ-W-461, BLACK ANNEALED STEEL, 16 GA. (MIN).

SPLICED IN ACCORDANCE WITH ACI 315, AND SPLICES SHALL BE 40x DIA. OF BAR SIZE (MIN).

ELECTRICAL NOTES: (ALL ELECTRICAL WORK BY OTHERS)

ALL WORK IN POOL AREA SHALL BE IN ACCORDANCE WITH CURRENT NEC, ARTICLES 250 & 680, AS WELL AS AUSTIN CODE ORDINANCE # 20141211-199

ELECTRICAL CONTRACTOR SHALL COMPLY WITH THE MOST RECENTLY REVISED VERSIONS OF ALL APPLICABLE REQUIREMENTS OF LAWS, RULES, REGULATIONS, CODES AND ORDINANCES OF FEDERAL, STATE, AND LOCAL AUTHORITIES HAVING JURISDICTION

ALL EQUIPMENT AND MATERIALS SHALL COMPLY WITH SAID AUTHORITIES WHETHER INDICATED ON THE CONTRACT DOCUMENTS OR NOT

ELECTRICAL CONTRACTOR SHALL PROVIDE A DISCONNECTING MEANS PER NEC, (I.E. BREAKERS) FOR ALL ELECTRICAL EQUIPMENT

THESE DRAWINGS ATTEMPT TO GIVE REASONABLE INDICATIONS OF THE LOCATIONS OF THE VARIOUS EQUIPMENT AND DEVICES - ELECTRICAL CONTRACTOR SHALL COORDINATE LOCATIONS WITH OTHER TRADES AND OWNER AS REQUIRED BY SITE CONDITIONS, AND ALL AUTHORITIES HAVING JURISDICTION

ELECTRICAL CONTRACTOR SHALL COORDINATE ALL CONDUIT ROUTING WITH THE STRUCTURE, PIPING, AND OTHER EXISTING CONDITIONS AS REQUIRED FOR A COMPLETE, CONFLICT FREE INSTALLATION

ALL CONDUIT SHALL RUN PARALLEL TO WALLS AND FLOORS - COORDINATE WITH OTHER TRADES

PROVIDE EQUIPMENT GROUNDING CONDUCTOR SIZED PER NEC TABLE 250.122 IN ALL ELECTRICAL CONDUITS SERVING POOL EQUIPMENT, LIGHTING OR POWER IN POOL AREA

A SEPARATE, GREEN GROUND CONDUCTOR SHALL BE PROVIDED WITH ALL BRANCH AND FEEDER CIRCUITS, SIZE PER NEC 250-95, UNLESS NOTED OTHERWISE

ALL SINGLE POLE CIRCUITS SHALL CONTAIN A SEPARATE NEUTRAL CONDUCTOR

ELECTRICAL CONTRACTOR TO BOND ALL METAL WITHIN 15' OF SWIMMING POOLS, INCLUDING BUT NOT LIMITED TO:

STEEL COLUMNS, WALLS, WINDOW FRAMES, DOORS, DOOR FRAMES, ALL METALLIC PLUMBING, ALL METALLIC POOL EQUIPMENT, AND REINFORCEMENT STEEL IN POOLS

BOND WIRE TO BE #8 BARE COPPER

THIS DRAWING IS DIAGRAMMATIC IN NATURE AND SHOULD BE CONSIDERED CONCEPTUAL. IT IS THE BUILDER'S RESPONSIBILITY TO ASCERTAIN THE VALIDITY OF THE DESIGN. UNDER NO CIRCUMSTANCES SHOULD THE DESIGNER BE HELD RESPONSIBLE FOR ERRORS OR INCONSISTENCIES, OR FAILURE TO COMPLY WITH COMMONLY ACCEPTED CONSTRUCTION METHODS OR STANDARDS.

**SHEETS**

COVER SHEET, SITE MAP AND LEGEND  
CONSTRUCTION NOTES, SHEETS, SPECIFICATIONS  
OVERALL LAYOUT AND NOTES  
DIMENSIONAL LAYOUT, ELEVATIONS  
POOL SECTIONS AND SHOTCRETE DETAILS  
PLUMBING AND EQUIPMENT ROOM LAYOUT  
LIGHTING LAYOUT

COVER  
SP-N1  
SP-01  
SP-02  
SP-03  
SP-04  
SP-05

**POOL SPECIFICATIONS**

<b>TYPE / CLASS</b>	PRIVATE RESIDENTIAL
<b>DIMENSIONS</b>	POOL: 14'-6" x 11'-6" SPA: 9'-0" x 7'-6"
<b>WATER LINE PERIMETER</b>	68'-0"
<b>DEPTH</b>	4'-10" POOL, 3'-0" SPA
<b>VOLUME</b>	7,200 GALLONS
<b>WATER SURFACE AREA</b>	240 SQ.FT.
<b>TOTAL INTERNAL SURFACE AREA (LESS SURGE TANK)</b>	512 SQ.FT.

**PLUMBING AND EQUIPMENT**

WALL RETURNS - PENTAIR (2x)  
MAIN DRAINS - PENTAIR (4x)  
w/VGB APPROVED ANTI-VORTEX GRATE

FILTRATION:  
PENTAIR CLEAN AND CLEAR PLUS 520 @ POOL, 240 @ SPA

POOL FILTRATION PUMP:  
PENTAIR INTELLIFLO XF VS 5 HP, 208/230v 3-PHASE, 245 GPM @ 52 FT. T.D.H.

SPA FILTRATION PUMP:  
PENTAIR INTELLIFLO VS+SVRS 3 HP, 208/230v 3-PHASE, 60 GPM @ 65 FT T.D.H.

CHLORINATION:  
(2x) RAINBOW HC320 OFFLINE 1" PVC SLIP STREAM SOLID TCCA TABLET FEED 90% AVAILABLE CL<sub>2</sub> BY WEIGHT TRICHLORO-S-TRIAZINETRIONE 15 LBS STORAGE CAPACITY

MAKEUP/AUTO FILL: JANDY LEVOLOR

**ABBREVIATIONS**

@	AT
Ø	DIAMETER
(4x)	TOTAL QUANTITY OF ITEMS
A.D.A.	AMERICANS WITH DISABILITIES ACT
A	AMPS
B-	BACKWASH PLUMBING
C.I.P.	CAST IN PLACE
CL	CENTERLINE
C. TO C.	CENTER TO CENTER
CONT.	CONTINUOUS
C.J.	CONTROL JOINT
EA.	EACH
EXCV.	EXCAVATION
E.J.	EXPANSION JOINT
GAL.	GALLONS
G.P.M.	GALLONS PER MINUTE
H.P.	HORSE POWER
LN. FT.	LINEAR FEET
M-	MAIN DRAIN PLUMBING
MAX.	MAXIMUM
MIN.	MINIMUM
O.C.	ON CENTER
O.C.E.W.	ON CENTER EACH WAY
R	RADIUS
R-	RETURN PLUMBING
REQ.	REQUIRED
S.V.R.S.	SAFETY VACCUM RELEASE SYSTEM
SQ. FT.	SQUARE FEET
S.S.	STAINLESS STEEL
S-	SUCTION (SKIMMER) PLUMBING
TH.	THICKNESS
T.B.D.	TO BE DETERMINED
T.B.F.V.	TO BE FIELD VERIFIED
TOT.	TOTAL
T.D.H.	TOTAL DYNAMIC HEAD
T.O.W.	TOP OF WALL
v	VOLTS
w	WATTS
W.L.	WATER LINE
W.P.	WEATHER PROOF

**EQUIPMENT SPECIFICATIONS**

**IntelliFlo vs-svcs Pump**

**MATERIALS AND DESIGN**

**Pump Body**  
Volute type back pull out design for ease of working on impeller, diffuser and seal.

- Port Size**
  - Inlet (suction): 2 inch - 11 NPT
  - Outlet (discharge): 2 inch - 11NPT
- Material**
  - Glass filled polypropylene thermoplastic with threaded brass inserts for maximum strength.
  - 1/4 inch NPT drain plug of thermoplastic thumbscrew (no tool required) design on the strainer for winterizing.
- Impeller**
  - Glass filled PPO resin enclosed design for corrosion prevention and maximum flow efficiency.
  - Threaded brass insert for maximum strength.
- Diffuser**
  - Glass filled polypropylene thermoplastic material with bronze impeller wear ring.
  - FunnelFlo design for maximum efficiency.
- Seal plate**
  - Glass filled thermoplastic material with threaded brass inserts for strength.
- Mechanical Seal**
  - Type 6A mechanical seal.
- Base**
  - Glass filled polypropylene thermoplastic with slotted holes for easy mounting.
- Gaskets**
  - Buna N rubber compression resistant.
- Bolts, Nuts, and Washers**
  - Stainless steel.
- Corrosion Prevention**
  - All thermoplastic pump for maximum hydraulic performance, noise reduction and corrosion prevention.

**Hair and Lint Strainer**

- Basket**
  - Polypropylene thermoplastic basket colored white for easy debris removal.
  - 7.75 inch tall basket with large open area exceeding the requirements of NSF for maximum debris removal and efficiency.
- Lid**
  - Clear "see thru" polycarbonate thermoplastic lid for easy view into the basket area.
- Lid Locking Ring**
  - Glass filled thermoplastic.
  - Cam and Ramp™ Lid and Locking Ring allow for quick and easy access to the basket.

**Motor**

- Frame and Type**
  - NEMA Rated 56 Frame square flange totally enclosed fan-cooled.
  - Permanent magnet synchronous motor (PMSM).
- Shaft**
  - DS 8018 stainless steel construction.
- Thermal Overload Protection**
  - Thermal overload protection provided by the integral motor control.
- Bearings**
  - Lubricated, double sealed, stainless steel, single row ball bearings.

**Electrical**

- 230 Volts, 1 phase, 16 amps maximum 50 or 60 hertz.
- Circuit breaker required: 20 amp, 2 pole, 230 volts.

**Pump Maximum Thermal Limits**

- Ambient air temperature: 130° F.
- Liquid temperature: 104° F.

**CLEAN & CLEAR® PLUS CARTRIDGE FILTER**

Clamp ring for easy and quick access to cartridges

Single-piece fiberglass-reinforced polypropylene tank for strength and corrosion resistance

2" plumbing for maximum flow and faster water cleaning

Easy access 1 1/2" drain makes proper winterization fast and simple

**FOUR CARTRIDGES IN A COMPACT DESIGN**

Clean & Clear Plus filters contain four polyester cartridges that hold enormous amounts of dirt, yet are easier to clean. The fiberglass-reinforced tank halves are secured with an innovative clamp ring—just loosen the ring and remove the top half for easy cartridge access and rinsing. Filter maintenance doesn't get any easier.

- Continuous internal air bleed helps prevent air build-up to keep the filter operating at peak performance.
- Single-piece base and body for strength, stability and years of dependable service.
- One-year limited warranty. See warranty for details.

Model Number	Filter Area Sq. Ft.	Vertical Clearance*	Filter Diameter	Flow Rate GPM Res.**	Comm.	8 hrs.	10 hrs.	12 hrs.
CCP240 <sup>1</sup>	240	56"	21.5"	90	90	43,200	54,000	64,800
CCP320 <sup>1</sup>	320	62"	21.5"	120	120	57,600	72,000	86,400
CCP420 <sup>1</sup>	420	68"	21.5"	150	150	72,000	90,000	108,000
CCP520 <sup>1</sup>	520	74"	21.5"	150	150	72,000	90,000	108,000

NSF Listed  
\*Required clearance to remove filter elements  
\*\*Maximum flow rate

AVAILABLE FROM:

**PENTAIR**

1620 HAWKINS AVE, SANFORD, NC 27330 800.831.7133 WWW.PENTAIRPOOL.COM

All Pentair trademarks and logos are owned by Pentair, Inc. Clean & Clear® and Eco Select® are registered trademarks of Pentair Water Pool and Spa, Inc. and/or its affiliated companies in the United States and/or other countries. Because we are continuously improving our products and services, Pentair reserves the right to change specifications without prior notice. Pentair is an equal opportunity employer.

pumps • filters • heaters • heat pumps • automation • lighting • cleaners • sanitizers • water features • maintenance products

1/13 Part # P1-131 ©2013 Pentair Aquatic Systems. All rights reserved.

**REYNA DESIGN, LLC**  
O: 512.687.7869 C: 512.786.7814  
WWW.REYNADESIGN.US

**BWERKS, LLC**  
11183 Circle Drive, Ste. A  
AUSTIN, TX 78736  
PHONE: 512.649.4040  
WWW.BWERKS.COM

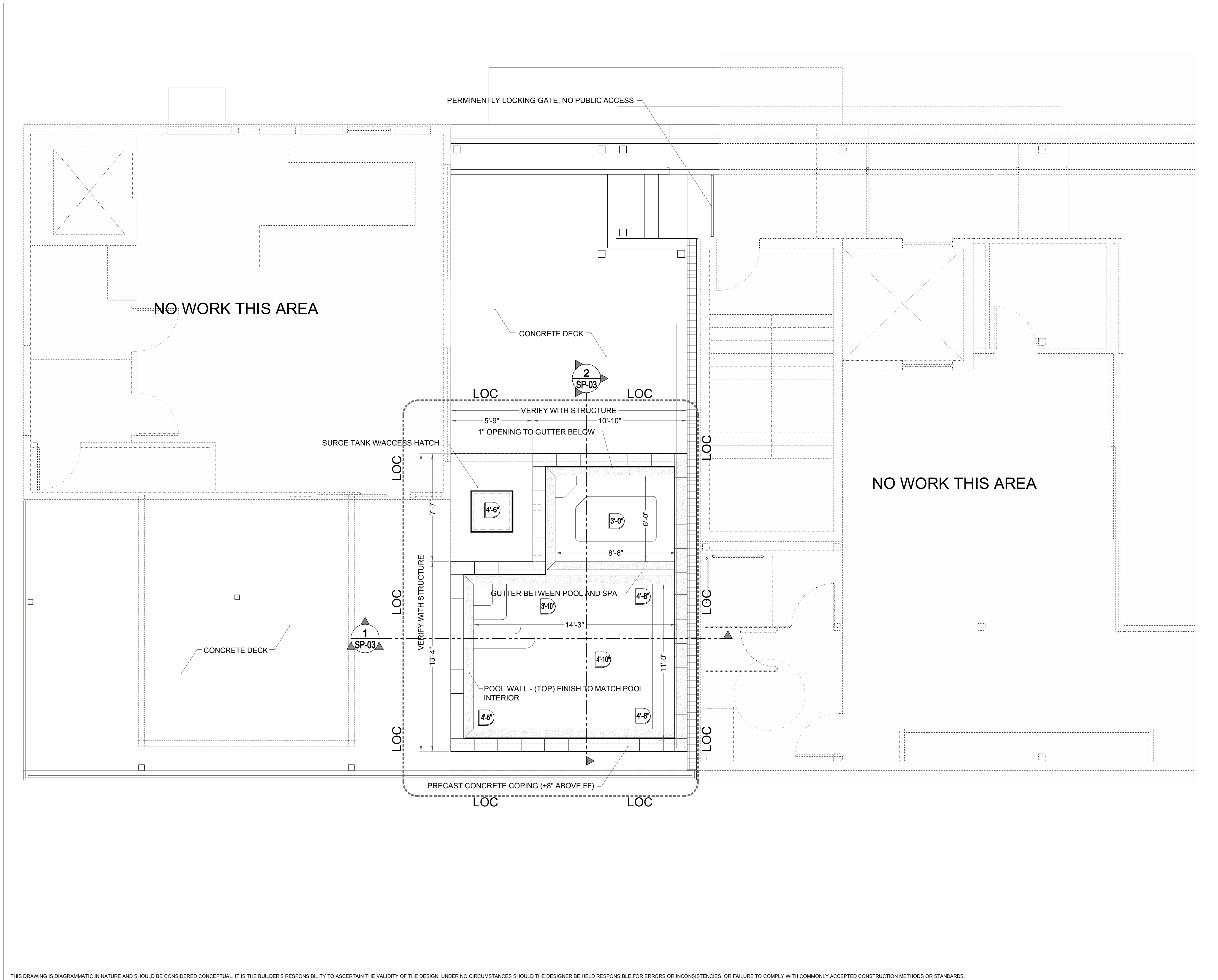
© 2016 REYNA DESIGN, LLC

**RILEY BUILDING CONDO**

SWIMMING POOL SHOP DRAWINGS  
219 W. FOURTH STREET, AUSTIN, TX 78701

NOT FOR CONSTRUCTION

**NOTES, SPECS**  
SCALE: N/A SHEET: SP-N1



THIS DRAWING IS DIAGRAMMATIC IN NATURE AND SHOULD BE CONSIDERED CONCEPTUAL. IT IS THE BUILDER'S RESPONSIBILITY TO ASCERTAIN THE VALIDITY OF THE DESIGN. UNDER NO CIRCUMSTANCES SHOULD THE DESIGNER BE HELD RESPONSIBLE FOR ERRORS OR INCONSISTENCIES, OR FAILURE TO COMPLY WITH COMMONLY ACCEPTED CONSTRUCTION METHODS OR STANDARDS.

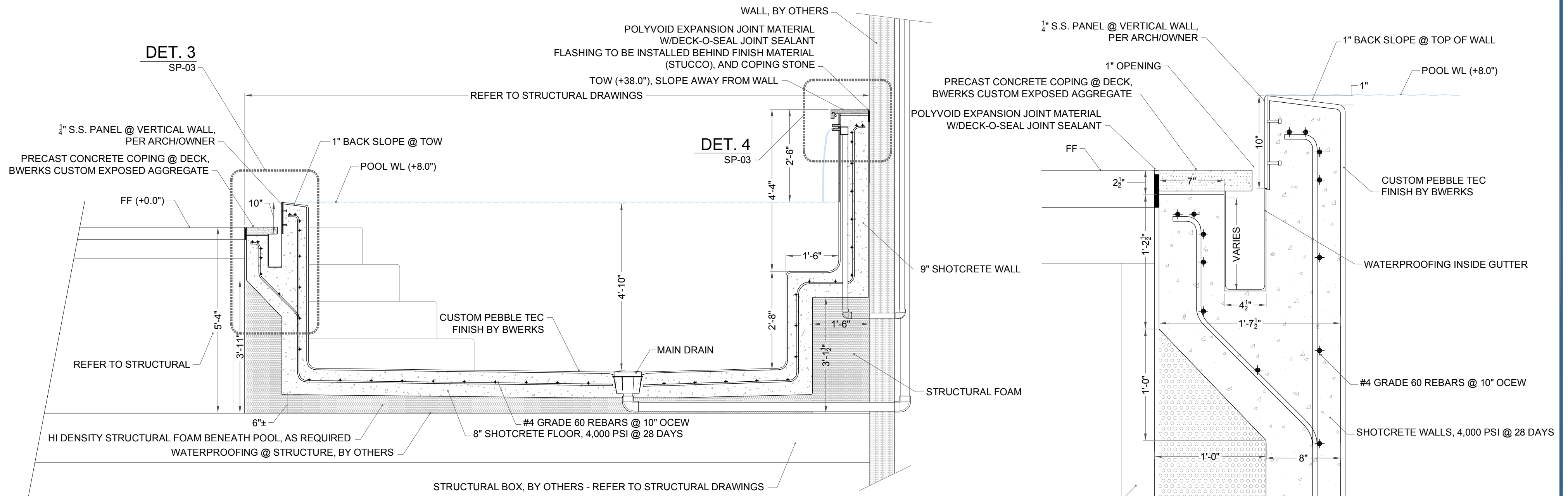
THIS DRAWING, ALL INFORMATION CONTAINED WITHIN, AND ALL SUBMITTED INFORMATION RELATING TO THIS DRAWING, IS THE PROPERTY OF REYNA DESIGN. POSSESSION, USE, OR DUPLICATION BY ANYONE OTHER THAN THE INTENDED RECIPIENT(S), OR WITHOUT EXPLICIT AUTHORIZATION IS PROHIBITED BY LAW AND SUBJECT TO PROSECUTION.



ELEVATIONS	
TOC	+ 0.0"
FF	+ 0.0"
WL	+ 8.0"
A	- 6.0"
B	- 9.5"
C	- 12.0"

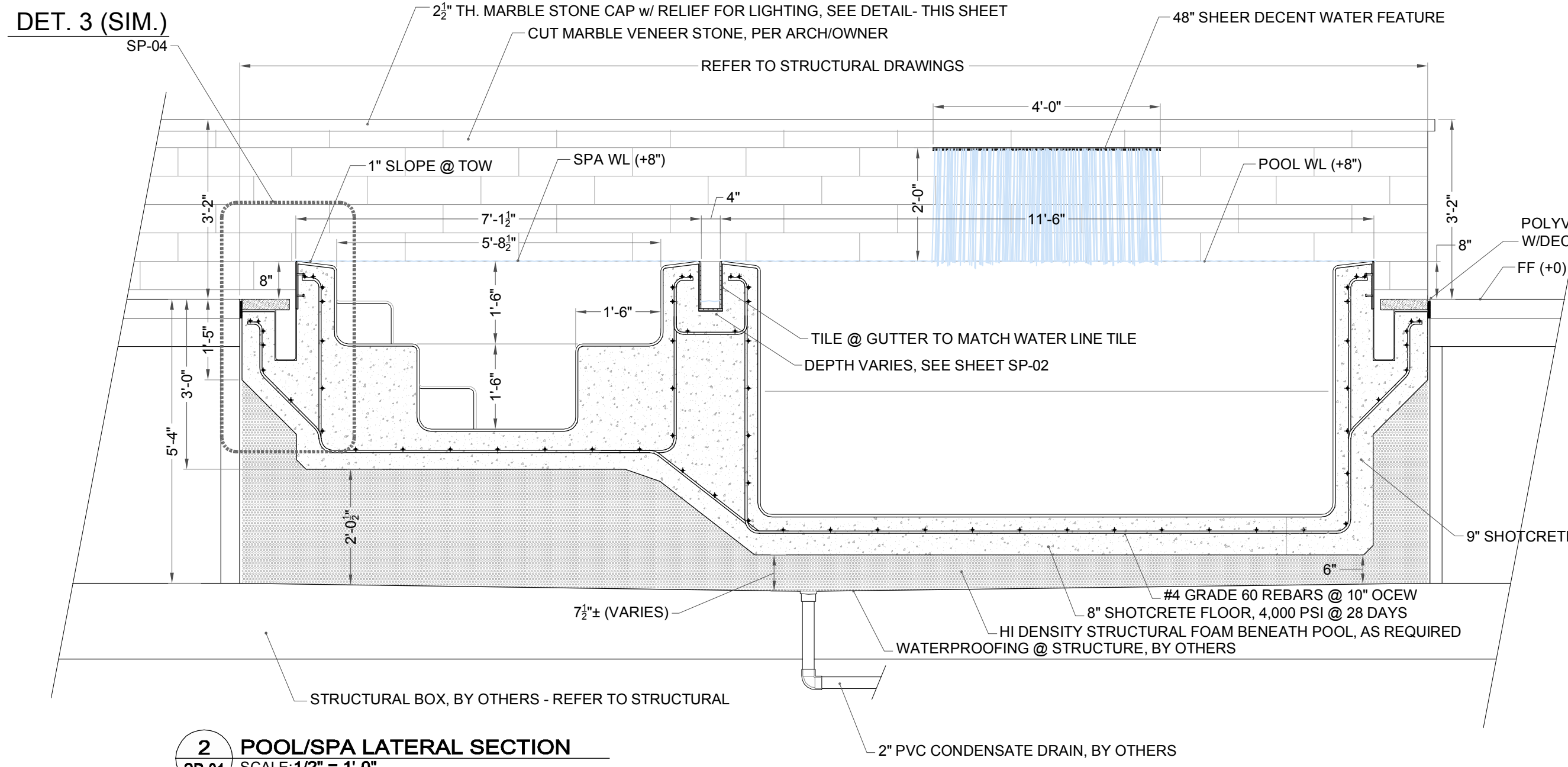
TOC TOP OF COPING (SHOULD BE THE SAME AS FINISH FLOOR)  
 FF FINISH FLOOR ELEVATION (AT THE COPING)  
 WL WATERLINE

POOL EQUIPMENT ON ROOF ABOVE

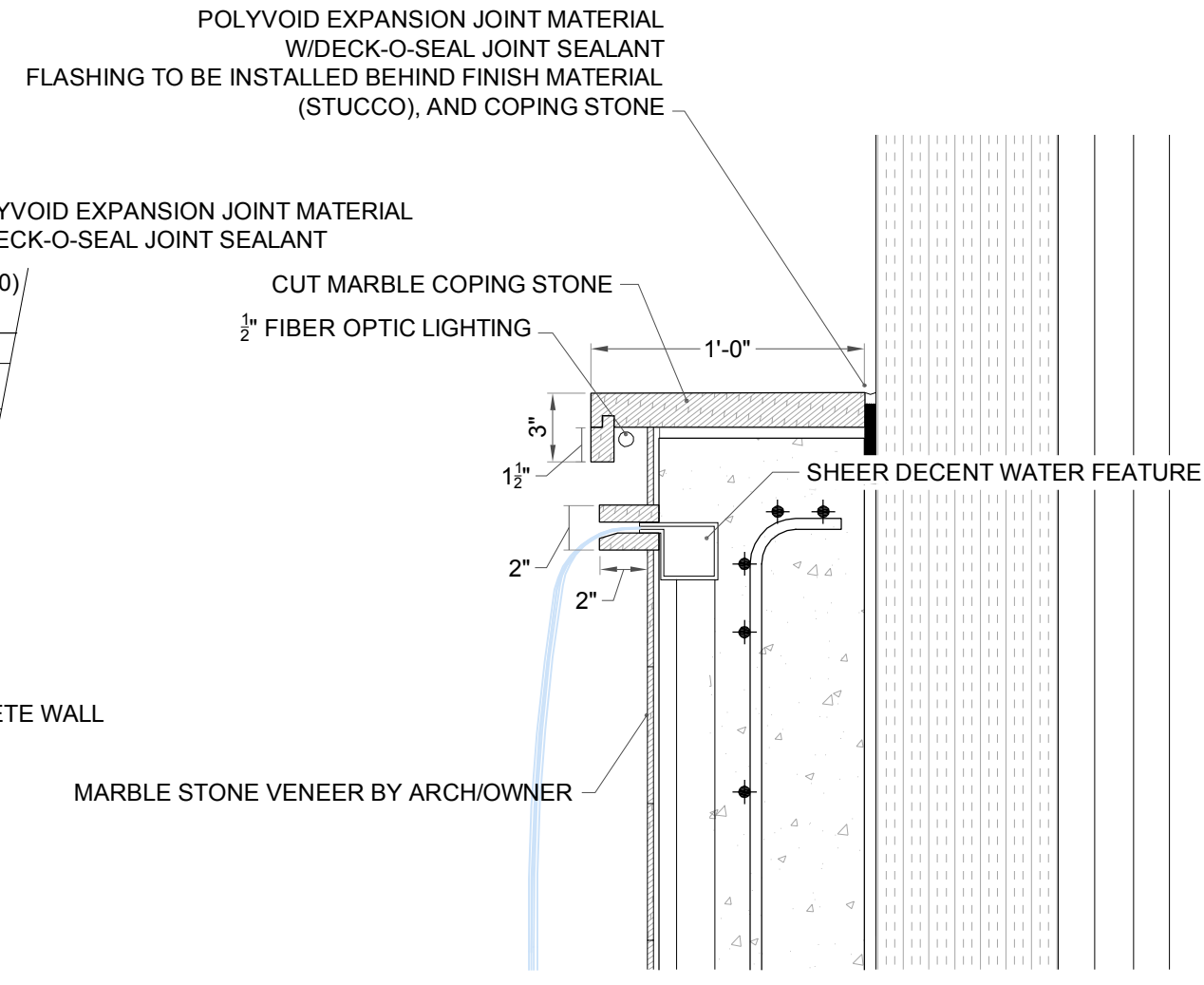


**1 POOL LONGITUDINAL SECTION**  
 SP-01 SCALE: 1/2" = 1'-0"

**3 TROUGH DETAIL**  
 SP-03 SCALE: 1-1/2" = 1'-0" (1:8)



**2 POOL/SPA LATERAL SECTION**  
 SP-01 SCALE: 1/2" = 1'-0"

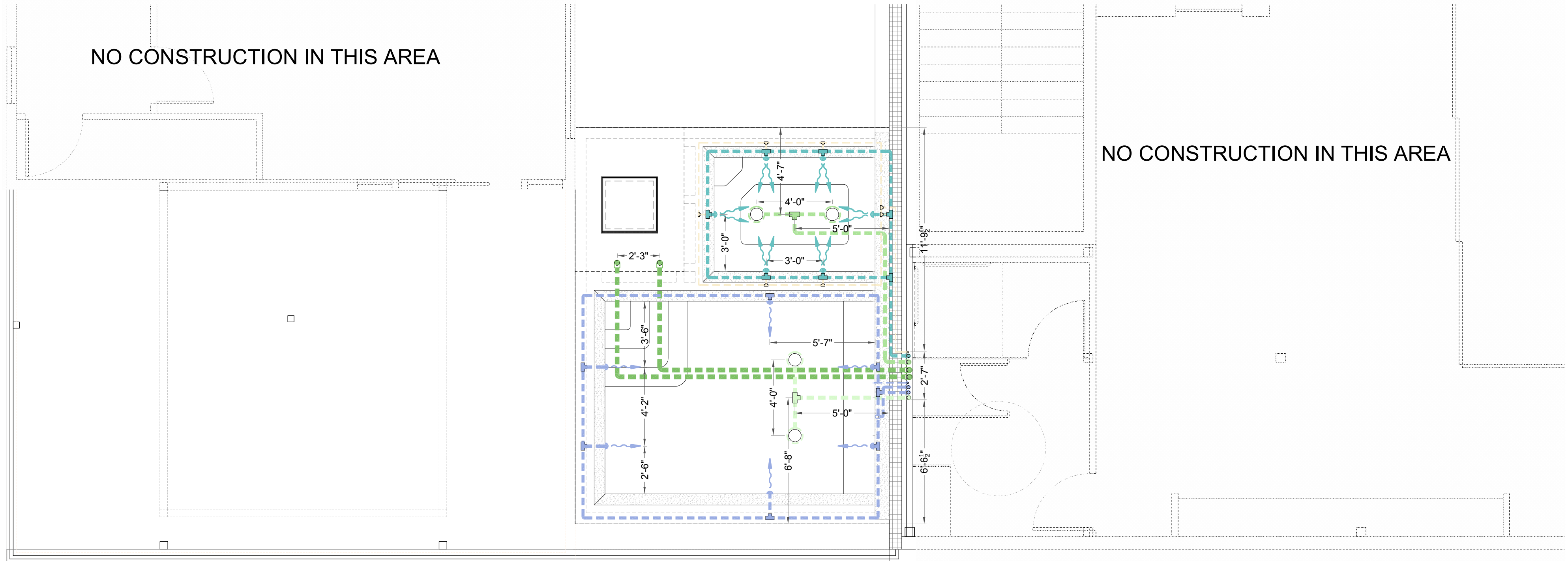


**4 WALL & WATER FEATURE DETAIL**  
 SP-03 SCALE: 1-1/2" = 1'-0" (1:8)

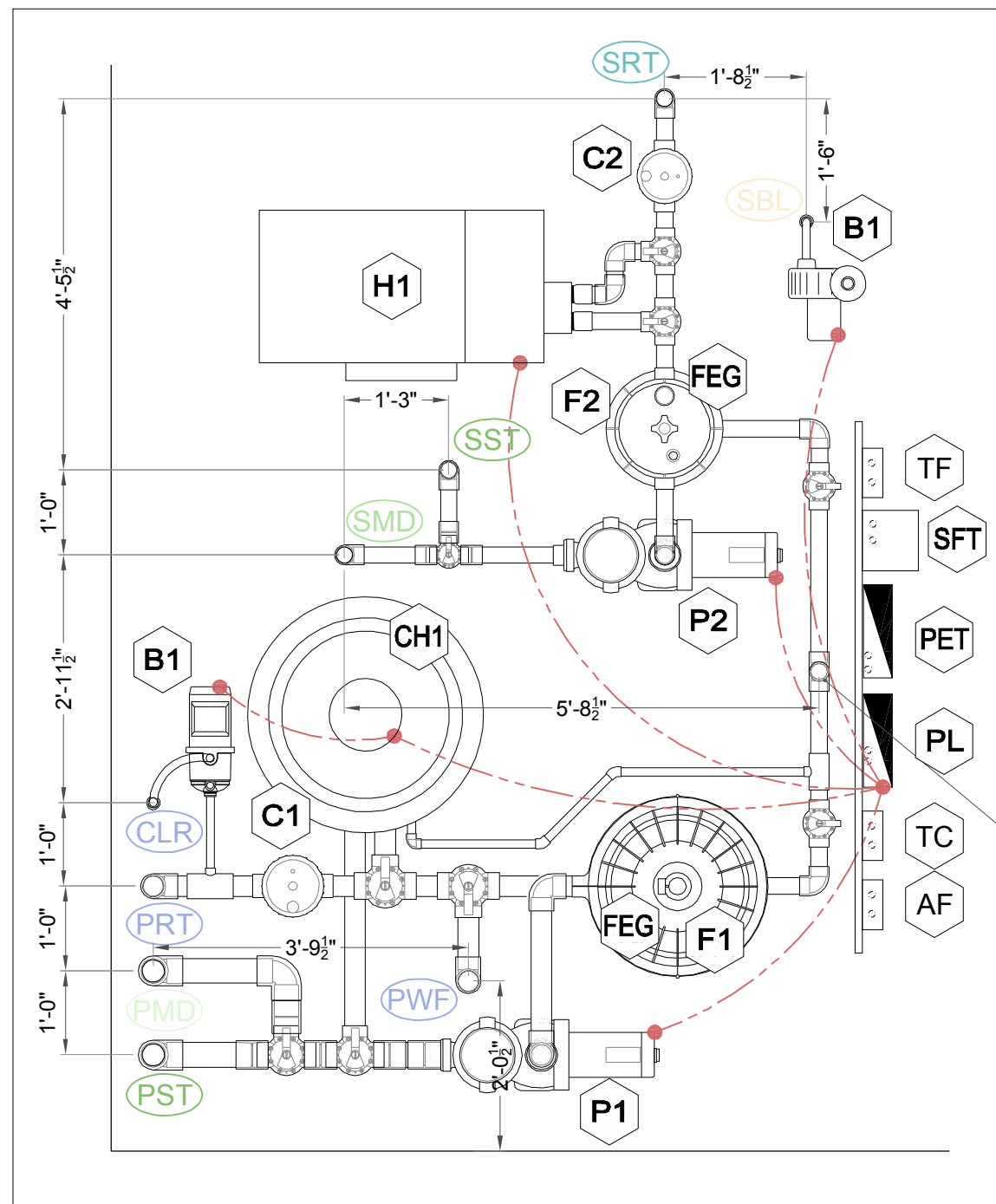
THIS DRAWING IS DIAGRAMMATIC IN NATURE AND SHOULD BE CONSIDERED CONCEPTUAL. IT IS THE BUILDER'S RESPONSIBILITY TO ASCERTAIN THE VALIDITY OF THE DESIGN. UNDER NO CIRCUMSTANCES SHOULD THE DESIGNER BE HELD RESPONSIBLE FOR ERRORS OR INCONSISTENCIES, OR FAILURE TO COMPLY WITH COMMONLY ACCEPTED CONSTRUCTION METHODS OR STANDARDS.  
 THIS DRAWING, ALL INFORMATION CONTAINED WITHIN, AND ALL SUBMITTED INFORMATION RELATING TO THIS DRAWING, IS THE PROPERTY OF REYNA DESIGN. POSSESSION, USE, OR DUPLICATION BY ANYONE OTHER THAN THE INTENDED RECIPIENT(S), OR WITHOUT EXPLICIT AUTHORIZATION IS PROHIBITED BY LAW AND SUBJECT TO PROSECUTION.

NO CONSTRUCTION IN THIS AREA

NO CONSTRUCTION IN THIS AREA



POOL EQUIPMENT ON ROOF ABOVE



EQUIPMENT LAYOUT @ ROOF DECK  
SCALE: 1/2" = 1'-0"

POOL PLUMBING

ALL PIPE TO BE SCH 40 PVC

LABEL	NAME	SIZE	TYPE
SST	SPA SURGE TANK	2"	SCH 40
SMD	SPA MAIN DRAIN	2"	SCH 40
SRT	SPA RETURN	2"	SCH 40
SBL	SPA BLOWER	1"	SCH 40
CLR	POOL CLEANER	1.5"	SCH 40
PRT	POOL RETURN	2.5"	SCH 40
PMD	POOL MAIN DRAIN	3"	SCH 40
PST	POOL SURGE TANK	3"	SCH 40
PWF	POOL W. FEATURE	2"	SCH 40

POOL EQUIPMENT

125 A, 3-PHASE

NO.	DESCRIPTION
P1	PENTAIR INTELLIFLO XF VS FILTRATION PUMP 230v, 3-PHASE, 5HP
P2	PENTAIR INTELLIFLO VS+SVRS FILTRATION PUMP 230v, 3-PHASE, 3HP
F1	PENTAIR CLEAN AND CLEAR PLUS CARTRIDGE FILTER 520 SQ FT.
F2	PENTAIR CLEAN AND CLEAR PLUS CARTRIDGE FILTER 240 SQ FT.
C1	PENTAIR RAINBOW HC320 CHLORINATOR TRI-CHLOR TABLET FEEDER
C2	PENTAIR RAINBOW HC320 CHLORINATOR TRI-CHLOR TABLET FEEDER
CH1	GLACIER GPC25 POOL COOLER
H1	LOCHINVAR ERN-402-A POOL/SPA HEATER 400K BTU
FEG	FILTER EFFLUENT PRESSURE GAUGE (PROVIDED WITH FILTER)
PL	(POOL ELEC. PANELBOARD) DISCONNECT PANEL FOR POOL EQUIPMENT, BY OTHERS
PET	PENTAIR EASY TOUCH EASY TOUCH CONTROL PANEL
TC1	INTERMATIC PE153P TIME CLOCK FOR POOL LIGHTS
TF1	INTERMATIC PX300 TRANSFORMER FOR POOL LIGHTS (300w)
AF1	JANDY/ZODIAC K1100 LEVOLOR AUTOMATIC WATER LEVEL, SENSOR IN TANK
SFT	STAR FLOOR POWER TOWER FIBER OPTIC LIGHTING CONTROL
B1	SILENCER 6320120 SPA BLOWER 120v, 1-PHASE, 2HP

DRAIN CONNECTION, ACTUAL LOCATION TBFV

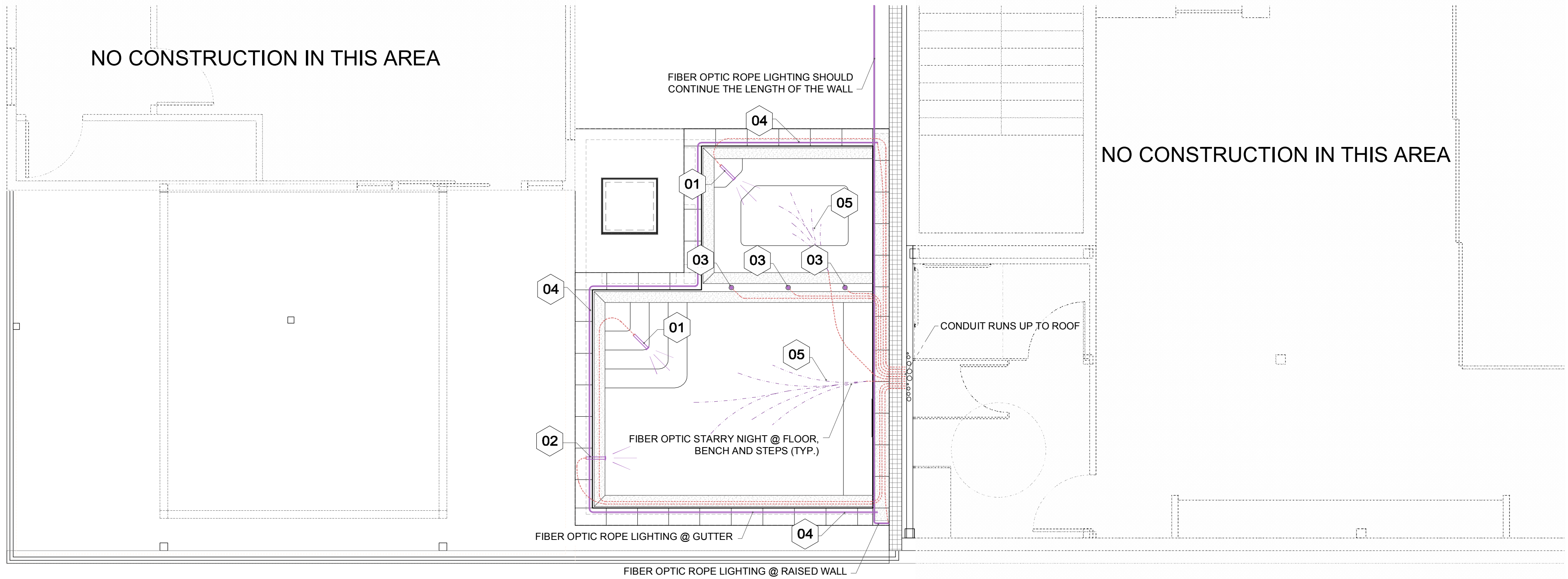
NOTES:

- ALL ELECTRICAL PER NEC-250, 680 AND CITY OF AUSTIN ORDINANCE # 20141211-199
- ALL UNDERGROUND WIRING, REF. NEC-680.10
- MAINTENANCE DISCONNECTING MEANS, REF. NEC-680.12
- EMERGENCY SHUT-OFF SWITCH, REF. COA ORDINANCE 20141211-199 SECTION 680.13
- POOL MOTORS, REF. NEC-680.21
- GFCI PROTECTION, REF. NEC-680.21(C) AND 680.22(A)(4)
- VOLTAGE LIMITATIONS, REF. COA ORDINANCE # 20141211-199 SECTION 680.23(A)(4)
- JUNCTION BOXES AND ELECTRICAL ENCLOSURES FOR TRANSFORMERS OR GFCI'S, REF. NEC-680.24
- EQUIPOTENTIAL BONDING, REF. NEC-680.26, SEE SHEET SP-02 FOR POOL PERIMETER BONDING LAYOUT/DIAGRAM
- NO MORE THAN 25 LBS OF CHLORINE TABS OR 4 GALLONS OF MURIATIC ACID SHALL BE STORED ON SITE AT ANY TIME
- BARE COPPER GROUND BOND TO CONNECT POOL PUMP TO COMMON GROUND AND CONTINUE TO POOL STRUCTURE

- ALL DIMENSIONS TBFV AND ARE SUBJECT TO CHANGE

THIS DRAWING IS DIAGRAMMATIC IN NATURE AND SHOULD BE CONSIDERED CONCEPTUAL. IT IS THE BUILDER'S RESPONSIBILITY TO ASCERTAIN THE VALIDITY OF THE DESIGN. UNDER NO CIRCUMSTANCES SHOULD THE DESIGNER BE HELD RESPONSIBLE FOR ERRORS OR INCONSISTENCIES, OR FAILURE TO COMPLY WITH COMMONLY ACCEPTED CONSTRUCTION METHODS OR STANDARDS.

THIS DRAWING, ALL INFORMATION CONTAINED WITHIN, AND ALL SUBMITTED INFORMATION RELATING TO THIS DRAWING, IS THE PROPERTY OF REYNA DESIGN. POSSESSION, USE, OR DUPLICATION BY ANYONE OTHER THAN THE INTENDED RECIPIENT(S), OR WITHOUT EXPLICIT AUTHORIZATION IS PROHIBITED BY LAW AND SUBJECT TO PROSECUTION.



POOL EQUIPMENT ON ROOF ABOVE

POOL LIGHTING				
ALL LIGHTS TO BE 12V				
LABEL	NAME/LOCATION	SIZE	QTY	TYPE
01	SAVI @ STEPS	60W	(2)	NICHELESS
02	SAVI @ WALL	60W	(1)	NICHELESS
03	SAVI @ GUTTER	60W	(3)	NICHELESS
04	PERIMETER ROPE	1/2" x 50'	(2)	FIBER OPTIC ROPE
05	FIBER STAR FLOOR	25x 60'	(2)	FIBER OPTIC POINTS

THIS DRAWING IS DIAGRAMMATIC IN NATURE AND SHOULD BE CONSIDERED CONCEPTUAL. IT IS THE BUILDER'S RESPONSIBILITY TO ASCERTAIN THE VALIDITY OF THE DESIGN. UNDER NO CIRCUMSTANCES SHOULD THE DESIGNER BE HELD RESPONSIBLE FOR ERRORS OR INCONSISTENCIES, OR FAILURE TO COMPLY WITH COMMONLY ACCEPTED CONSTRUCTION METHODS OR STANDARDS.  
 THIS DRAWING, ALL INFORMATION CONTAINED WITHIN, AND ALL SUBMITTED INFORMATION RELATING TO THIS DRAWING, IS THE PROPERTY OF REYNA DESIGN. POSSESSION, USE, OR DUPLICATION BY ANYONE OTHER THAN THE INTENDED RECIPIENT(S), OR WITHOUT EXPLICIT AUTHORIZATION IS PROHIBITED BY LAW AND SUBJECT TO PROSECUTION.